

FED. RD. DIST. NO.	STATE	FED. AID PROJ. NO.	FISCAL YEAR	SHEET NO.	TOTAL SHEETS
	ARK.			8	13

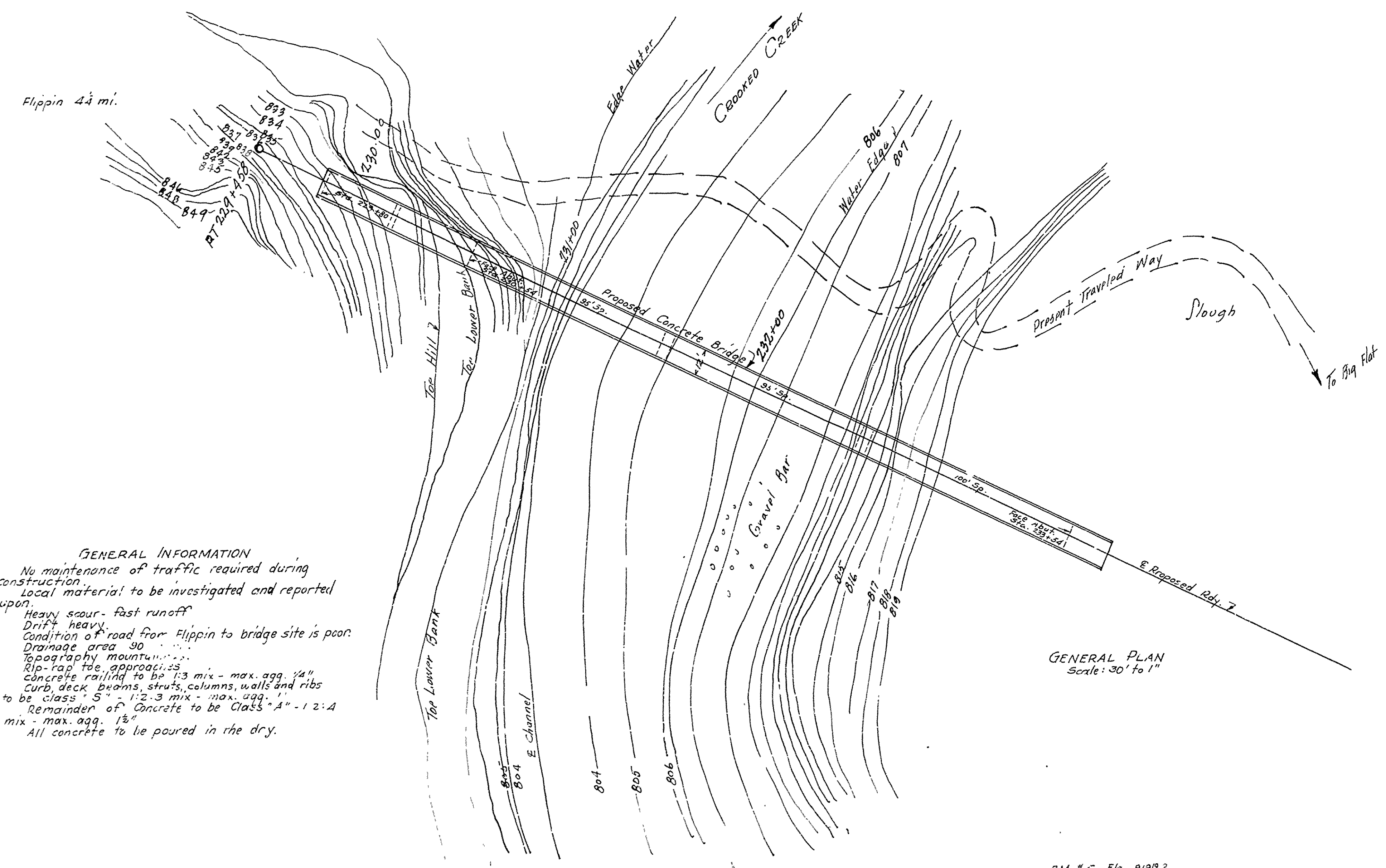
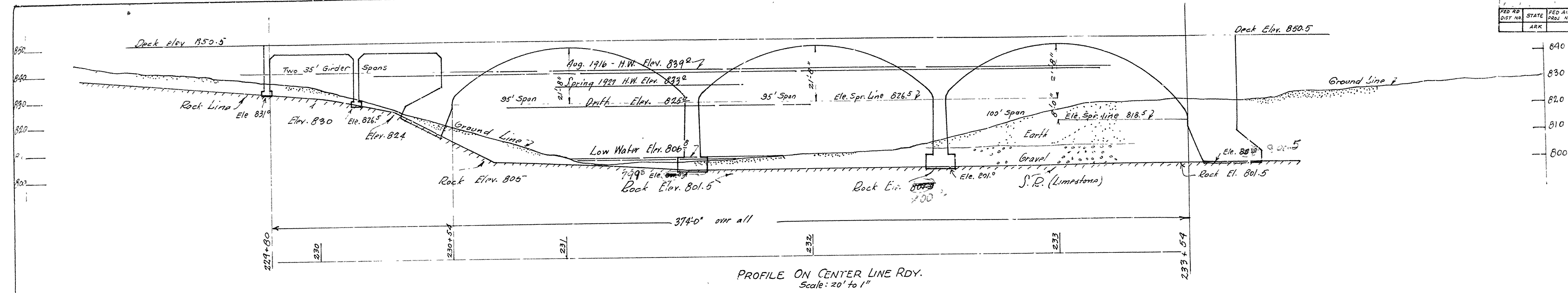


TABLE OF QUANTITIES

PART	CLASS	Cu. Yds.
Abutments	A	238.0
Piers	A	192.0
Ribs	S	122.0
Struts	S	4.5
Column walls	S	44.0
Columns	S	37.0
Beams	S	28.0
Girders	S	16.0
Head walls	S	16.0
Slab and coping	S	172.0
Railing	(Hand rail 1:3)	70.0
Total		889.5

19,000 lbs. reinforcing steel

Quantities

Dry Excavation 380 Cu. Yds

Wet " 226 " "

Rock " 53 " "

Class A Conc. 4171 " "

" D " 4196 " "

Reinforcing Steels 79,000 lbs.

Rip Exp 220 Sq. Yds

Concrete HandRail 794 lin. ft.

GENERAL INFORMATION

No maintenance of traffic required during construction.

Local material to be investigated and reported upon.

Heavy scour - fast runoff

Drift heavy

Condition of road from Flippin to bridge site is poor.

Drainage area 90

Topography mountainous

Rip-rap toe, approach, concrete railing to be 1:3 mix - max. agg. 1/4"

Curb, deck, beams, struts, columns, walls and ribs to be class "S" - 1:2.3 mix - max. agg. 1"

Remainder of Concrete to be Class "A" - 1:2:4 mix - max. agg. 1 1/2"

All concrete to be poured in the dry.

ALTERNATE PLAN

REINFORCED CONCRETE BRIDGE

OVER CROOKED CREEK

MARION COUNTY ARKANSAS

BM. #5 Elev. 913.9

Nail in Root 12" R. Oak

33' Lt. Sta. 341+40

ROUTE 101 - SECTION 2

Nearest shipping point

Flippin 4 1/2 mi. Mo. Pac. R.R.

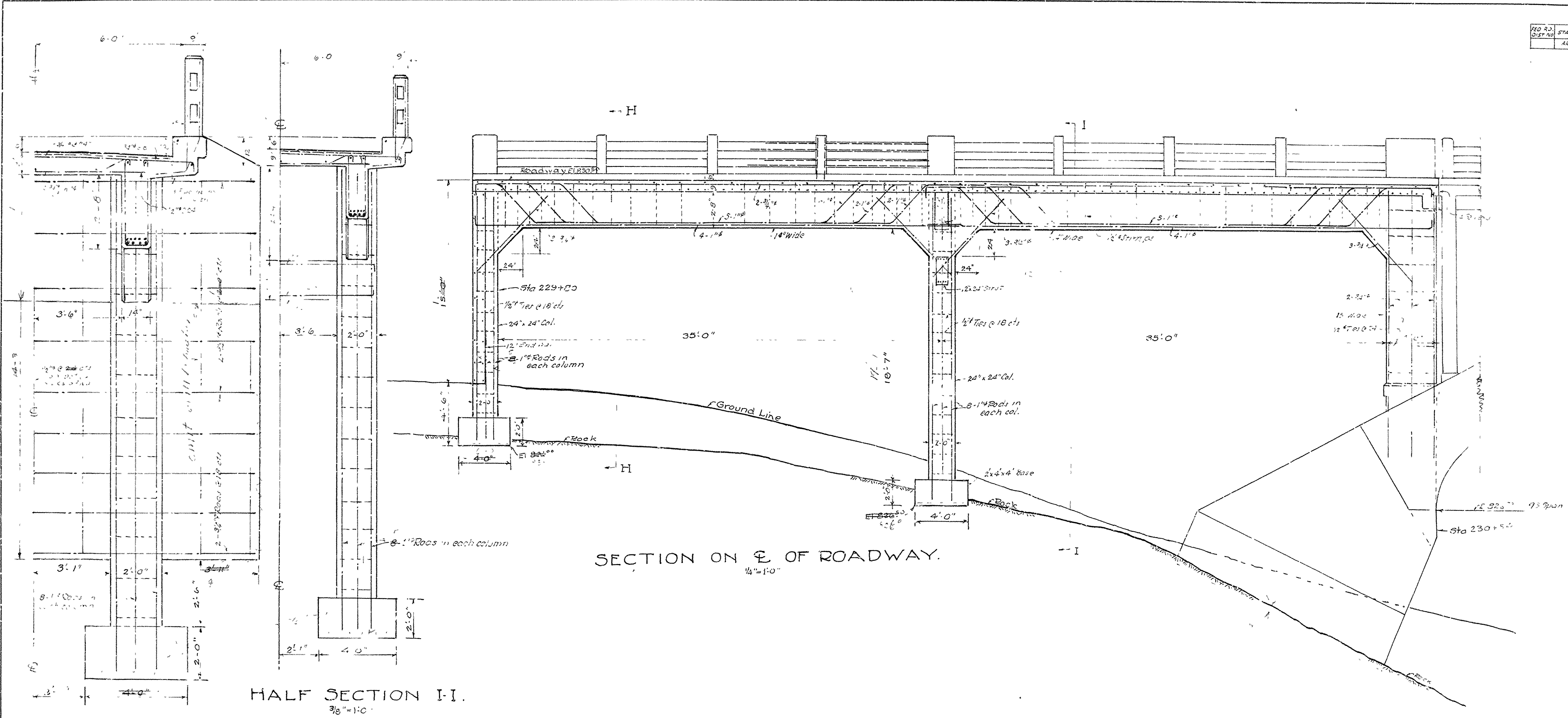
Scales As Noted

Oct 22 1927

Bridge 477-A

SHEET 8 of 13 SHEETS

FED. DIST. NO.	STATE	FED. AID PROJ. NO.	FISCAL YEAR	SHEET NO.	TOTAL SHEETS
	ARK.			9	13



SECTION ON E. OF ROADWAY.
1/4"=1'-0"

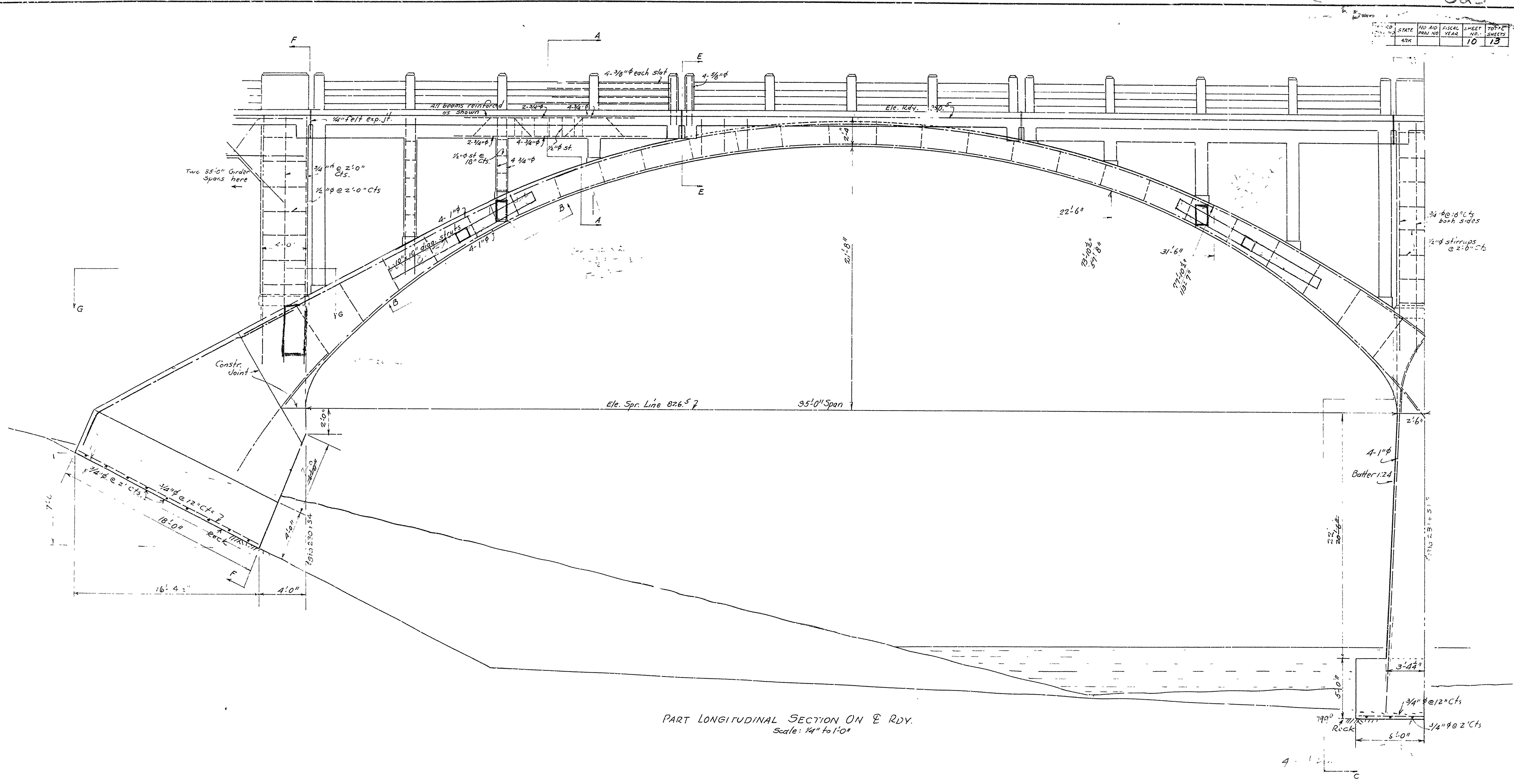
HALF SECTION I-I.
3/8"=1'-0"

HALF SECTION H-H.
1/2"=1'-0"

ALTERNATE PLAN
REINFORCED CONCRETE BRIDGE
 OVER CROOKED CREEK
 MARION COUNTY ARKANSAS

Scales As Noted
Oct 22 1927

STATE	FED. AID	FISCAL	SHEET	TOTAL
ARK.	PRJ. NO.	YEAR	NO.	SHEETS
			10	13

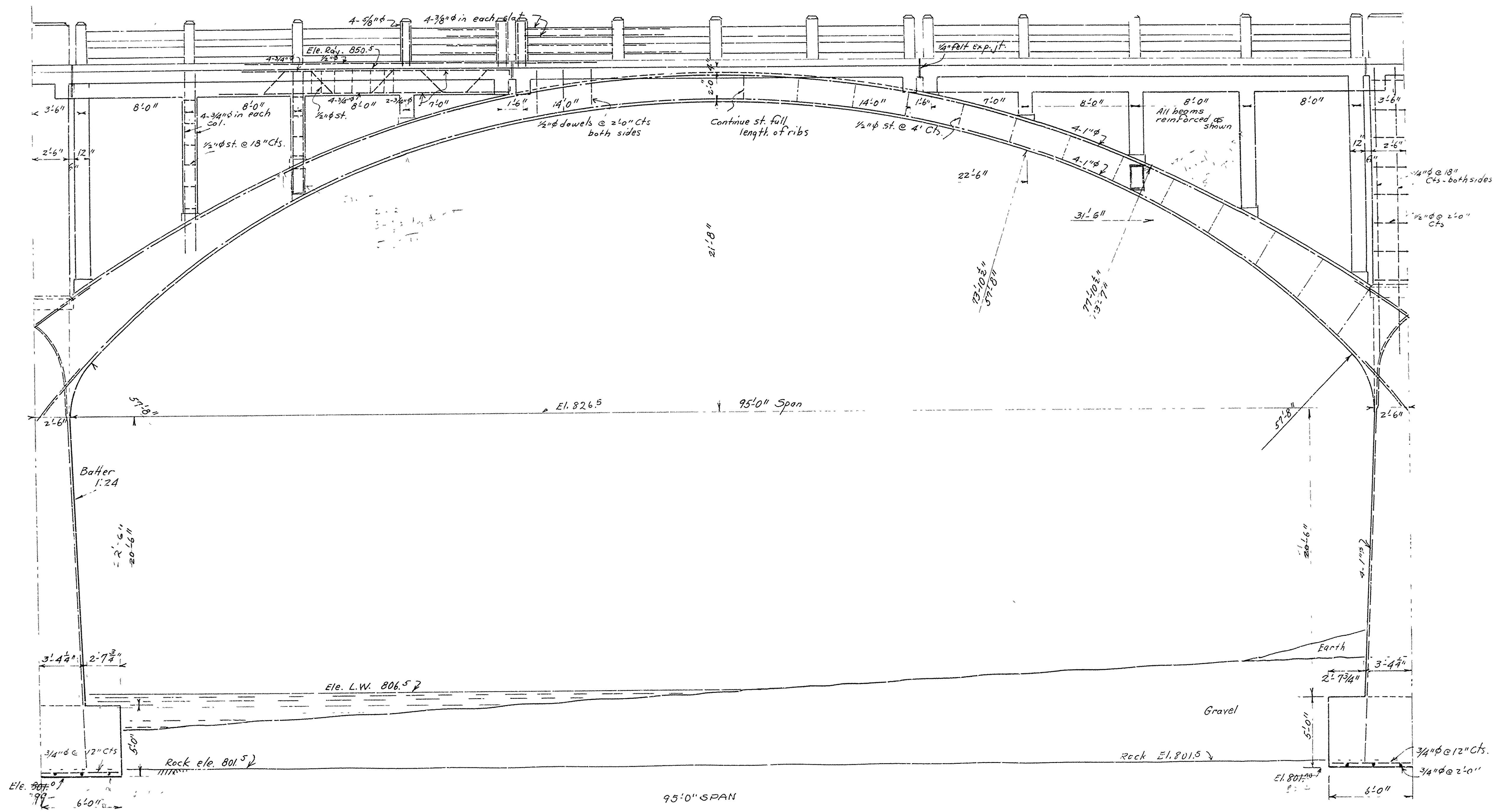


PART LONGITUDINAL SECTION ON E R.D.Y.
Scale: 1/4" to 1'-0"

ALTERNATE PLAN
REINFORCED CONCRETE BRIDGE
 OVER CROOKED CREEK
 MARION COUNTY ARKANSAS

Scales As Noted
 Oct. 22 1927

FED. RD. DIST. NO.	STATE	FED. AID PROJ. NO.	FISCAL YEAR	SHEET NO.	TOTAL SHEETS
	ARK.			11	13



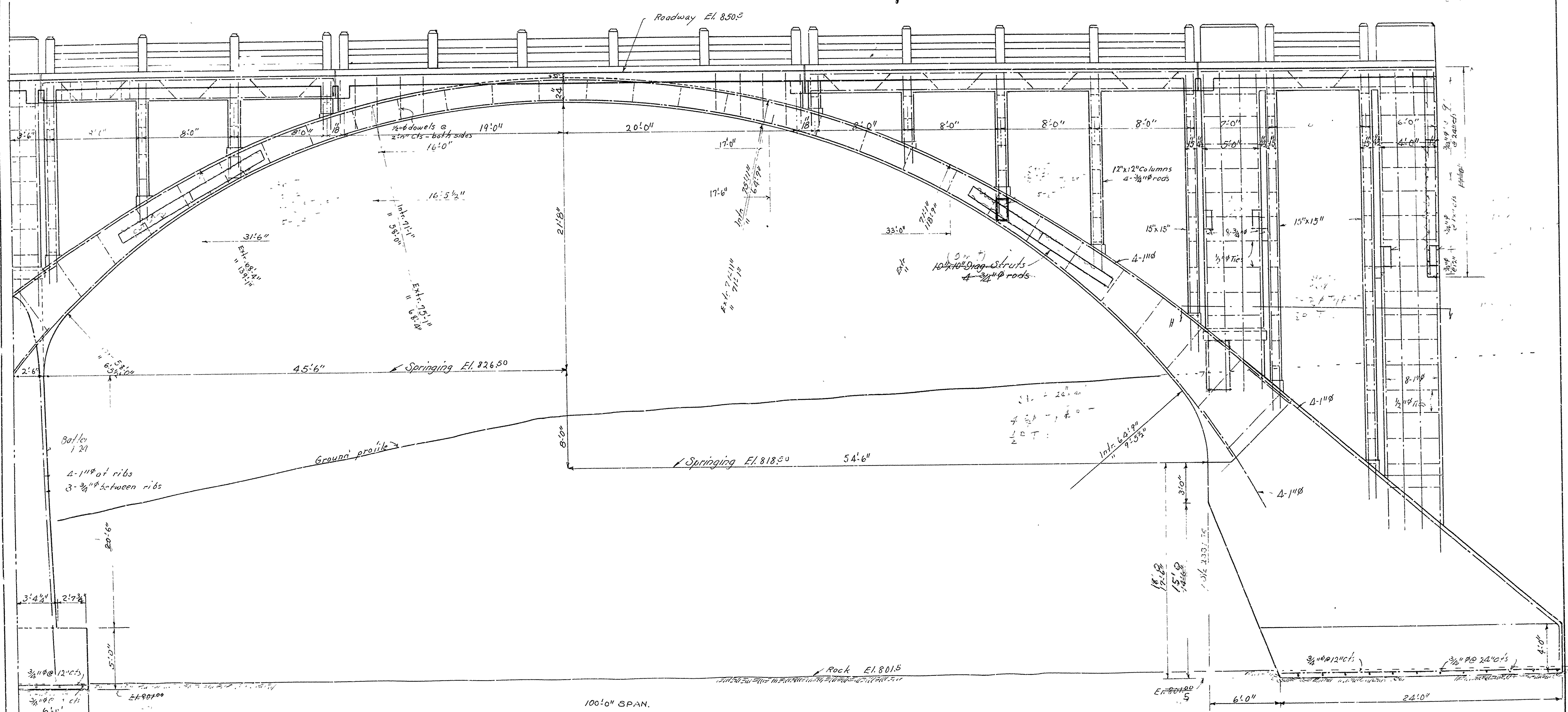
95'-0" SPAN
 LONGITUDINAL SECTION
 Scale 1/4"=1'-0"

ALTERNATE PLAN
REINFORCED CONCRETE BRIDGE
 OVER CROOKED CREEK
 MARION COUNTY ARKANSAS

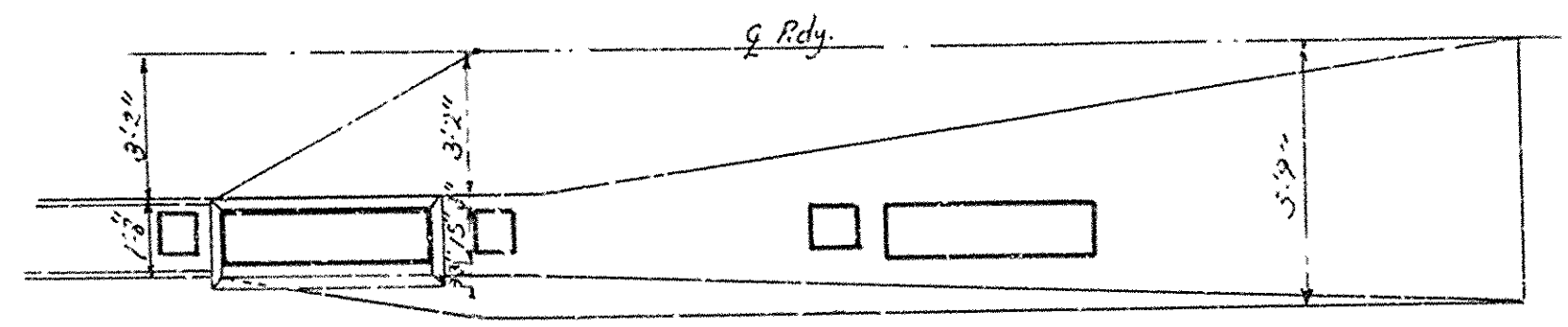
Scales As Noted
 Oct 22 1927

4:6

FED. RD. DIST. NO.	STATE	FISCAL YEAR	SHEET NO.	TOTAL SHEETS
ARK	ARK	12	13	



100'-0" SPAN.
 LONGITUDINAL SECTION.
 scale 1/4"=1'-0"



HALF PLAN H-H

ALTERNATE PLAN
REINFORCED CONCRETE BRIDGE
 OVER CROOKED CREEK
 MARION COUNTY ARKANSAS

Scales As Noted
 Oct. 22 1927